

# PLAYBILL®

Titusville Playhouse Inc.  
Titusville, FL

# Menopause The Musical®



**The Hilarious Celebration  
of Women and The Change!®**

# **TITUSVILLE PLAYHOUSE**

301 Julia Street  
Titusville, FL 32796

Phone: 321-268-1125

Office Hours: Tues - Fri  
10:00am - 3:00pm

[www.TitusvillePlayhouse.com](http://www.TitusvillePlayhouse.com)

## **Board of Directors**

President	Katy Ball
Vice President	Melissa Lugo
Treasurer	Karen MacDonald
Secretary	Jim Ball

Bob Dillow, Bill Gary, Steve Griffin,  
Frank Steele, Matt Werle

## **Advisory Members**

Brian Minyard, Kristy Mount, Patrick Sullivan

## **Theatre Staff**

Steven J. Heron – Executive & Artistic Director  
Niko Stamos – Associate Artistic Director & Director of Education  
Page Howard – Patron Experience Director  
Marcia Gaedcke – Development Director  
Spencer Crosswell – Resident Musical Director & Sound Designer  
Jordyn Linkous – Resident Costume & Wig Designer  
Eric Norton – Technical Director  
Davis Vande Steeg – Master Electrician  
Kaylee Kilgore – Resident Prop Master & Scenic Painter  
Emily O'Neal – Stage Manager  
Cory Evans – Actor/Technician  
Carson Skidmore – Actor/Technician  
Brendan Kellman Sowerby – Actor/Technician  
Nikki Johnson – Box Office Assistant/House Manager  
Brittany Morra – House Manager  
Michelle Zeegers – House Manager  
Meghan Osborne – Facilities

Titusville Playhouse Presents  
By Special License from GFour Productions

# Menopause The Musical®

Book and Lyrics by JEANIE LINDERS



WITH

REBECCA FISHER

DONNA J. HUNTLEY

KIMBERLY VANBIESBROUCK

ROBERTA B. WALL

.....

Lighting Design  
**RYAN PATRIDGE**

Set Design  
**BUD CLARK**

Costume Design  
**SUE HILL**

Sound Design  
**STEVE SHAPIRO**

.....

Music Supervisor & Additional Arrangements by  
**ALAN J. PLADO**

Directed by  
**SETH GREENLEAF**

.....

**GFOUR**<sup>™</sup>  
PRODUCTIONS

Winners of over  
50 Tony Awards®

.....

Original Direction by  
**KATHRYN CONTE**

Original Music Director & Orchestrator  
**C.T. HOLLIS**

Choreography Created by  
**PATTY BENDER**

# CAST

.....  
(IN ORDER OF APPEARANCE)

PROFESSIONAL WOMAN ..... DONNA J. HUNTLEY  
SOAP STAR..... REBECCA FISHER  
EARTH MOTHER..... ROBERTA B. WALL  
IOWA HOUSEWIFE .....KIMBERLY VANBIESBROUCK

# PRODUCTION TEAM

.....  
PRODUCTION STAGE MANAGER.....STEVEN J. HERON  
ASSISTANT STAGE MANAGER.....DAVIS VANDE STEEG  
SOUND BOARD OPERATOR..... LOGAN DENNINGHOFF  
BACKSTAGE CREW.....TRISTANN JONES, KAYLEE KILGORE  
SPOTLIGHT.....EMMA HOWARD

The entire action of the play takes place in Bloomingdale's, NYC  
*Menopause The Musical®* will be performed without an intermission.

.....  
This production operates under an agreement with Actors' Equity Association,  
the Union of Professional Actors and Stage Managers.  
All actors and stage manager are members of Actors' Equity.  
.....

Actors' Equity Association (AEA), founded in 1913, represents more than 45,000 actors and stage managers in the United States. Equity seeks to advance, promote and foster the art of live theatre as an essential component of our society. Equity negotiates wages and working conditions, providing a wide range of benefits, including health and pension plans. AEA is a member of the AFL-CIO, and is affiliated with FIA, an international organization of performing arts unions. The Equity emblem is our mark of excellence.



# MUSIC FOR THIS SHOW

.....  
WAS RECORDED BY:

KEYBOARDS ..... MICHAEL DUBAY  
DRUMS ..... DON MEOLI  
BASS ..... JONATHAN REM

The use of cameras, videotape recorders or audio recorders by members of the audience during  
the course of this production is strictly prohibited.  
Recording devices will be confiscated by the House Manager.

# THE MUSIC

## Music Parodied With Great Appreciation

SONGS WORDS • MUSIC PUBLISHER (USED BY PERMISSION) • COPYRIGHT DATE  
 Chain Of Fools (Warner/Chappel Music, Inc.) 1967 / I Heard It Through The Grapevine (EMI Music Publishing) 1967 / A Sign Of The Times (Universal Music Publishing Group) 1966 / Stayin' Alive (Universal Music Publishing Group) 1977 / The Lion Sleeps Tonight (Imagem Music, LLC.) 1961 / Heat Wave (The Rodgers and Hammerstein Organization) 1933 / Wishin' And Hopin' (Warner/Chappel Music, Inc./BMG Rights Management) 1963 / I'm Sorry (Universal Music Publishing Group) 1968 / The Great Pretender (Southern Music Publishing Co.) 1956 / California Girls (Universal/Rondor Music) 1965 / Help Me Rhonda (Universal/Rondor Music) 1965 / Lookin' For Love In All / The Wrong Places (EMI Music Publishing/Bluewater Music) 1980 / Don't Make Me Over (BMG Rights Mangement/Warner/Chappel Music, Inc.) 1962 / Beauty Is Only Skin Deep (EMI Music Publishing) 1966 / Puff, The Magic Dragon (Warner/Chappel Music, Inc/BMG Rights Management) 1963 / The Shoop Shoop Song (BMG Rights Management) 1965 / My Guy (EMI Music Publishing) 1961 / Don't Say Nothing Bad About My Baby (EMI Music Publishing) 1962 / I Got You Babe (Warner/Chappel Music, Inc.) 1965 / Good Vibrations (Universal/Rondor Music) 1966 / What's Love Got To Do With It (Warner/Chappel Music, Inc./Kobalt Music Publishing America, Inc.) 1984 / Only You (Cromwell Music) 1955 / New Attitude (Universal Music Publishing Group) 1985 / YMCA (Can't Stop Productions, Inc/Harlem West) 1978



Winners of over  
50 Tony Awards®

Founder/Chairman.....	Kenneth Greenblatt
CEO/President.....	Seth Greenleaf
CFO.....	Maureen Portlock
Director of Operations & Production.....	Kim Simari
Director of Sales & Marketing.....	Ashley Dinges
Director of Casting.....	Karie Koppel
Associate Director of Sales & Marketing.....	Alyssa Holland
Associate Director of Operations & Production.....	Caleb Spivey
Production Manager.....	John Findlay
Marketing Coordinator.....	Erica Gerold
Accountant.....	Lerro & Chandross Victor Lerro
IP Counsel.....	St. Onge, Steward, Johnston, & Reens LLC; Gene Winter/Jonathan Winter
Attorney.....	Boies, Schiller & Flexner LLP; Stuart Singer/James Grippando
In House Counsel.....	David Harris
Founder.....	Kenneth & Sandi Greenblatt
Founder.....	Alan & Kathi Glist

## Cast Biographies



**REBECCA FISHER** (*Soap Star*) Since her first performance as Soap Star in MENOPAUSE THE MUSICAL®, when she joined the Orlando cast, Rebecca has enjoyed being part of this show and the joy it brings to so many people. She's performed MTM in Singapore, Canada, and all over the United States. Her regional theatre credits include: Mrs. Lovett in SWEENEY TODD, Meredith Parker in BAT BOY: THE MUSICAL, Yitzhak in HEDWIG AND THE ANGRY INCH, Margery in HAND TO GOD, Julie Cavendish in THE ROYAL FAMILY, Fraulein Schneider in CABARET, and Vicki in THE FULL MONTY. Rebecca will perform as a solo cabaret artist in her upcoming show, MAKE SOMEONE HAPPY, at Orlando Shakes this winter. Rebecca and her husband, Joe Swanberg, are the parents and neighbors of costume designer and performer Kyla Swanberg in Orlando. Rebecca is a proud member of Actors' Equity. Learn more about her at [www.therebeccafisher.com](http://www.therebeccafisher.com).



**DONNA J. HUNTLEY** (*Professional Woman*) is an Ohio native who has enjoyed playing Professional Woman and Soap Star across the nation off and on since 2004 after completing world tours as a Guest Entertainer with Royal Caribbean Cruise Lines. With numerous regional commercials and TV appearances to her credit, some favorite Broadway, Off-Broadway and Regional theatre credits include: LENA HORNE: THE LADY AND HER MUSIC, SHADOW BOX (Beverly), OUR LADY OF 121ST STREET (Inez), HAIRSPRAY (Motor Mouth Mable), NUNSENSE (Sister Herbert), CHICAGO (Matron Mama Morton), and BARNUM (Joyce Heth). Winner of a Presidential Award for Best Overseas USO Tour, Donna worked with Richard Pryor Here and Now, co-wrote and recorded with Atlantic Records as a member of Company B and solo with Sleath Records in Holland. She performed with The Platters, Ben Vereen, Mary Wilson of the Supremes, Latin Superstars El Puma and Chayanne to name a few. "It is truly an honor to be a part of the MENOPAUSE THE MUSICAL® family. To bring joy and laughter to our audiences while building lasting friendships and sisterhood on and off the stage continues to be a wonderful experience." Donna is a proud member of Actors' Equity Association.



**KIMBERLY VANBIESBROUCK** (*Iowa Housewife*) has had the great pleasure of performing Soap Star in MENOPAUSE THE MUSICAL® in theatres across the country. Her first production was in her hometown of Detroit, where MENOPAUSE THE MUSICAL® was awarded the honor of longest-running musical in the city's history and Best Ensemble Cast. Currently she resides in Chicago, where some of her other credits include, MOTHERHOOD THE MUSICAL, Judy Garland in BEYOND THE RAINBOW, FORBIDDEN BROADWAY, SWEET CHARITY, ALWAYS, PATSY CLINE, A CHORUS LINE, and CAT ON A HOT TIN ROOF. Kimberly is also a certified yoga, barre and kickboxing instructor. She feels extremely blessed and would like to take this opportunity to thank GFour Productions for bringing her back into the MENOPAUSE THE MUSICAL® family. Kimberly would also like to send all her love and appreciation to the best production she ever created...her beautiful daughter, Isobel. The theatre world is yours to conquer, my girl!



**ROBERTA B. WALL** (*Earth Mother*) first stepped on stage with **MENOPAUSE THE MUSICAL®** in the original L.A. production, which opened in 2003. Since then, she has toured with the show in the role of Iowa Housewife, performing coast to coast. She was brought on as vocal director for **MENOPAUSIA**, the Spanish version of the show in 2013, and has continued on as National Asst. Musical Director. Her other performing credits include Broadway – original casts of **SISTER ACT** and **LEAP OF FAITH**. National Tours – **SISTER ACT**, **BEAUTY AND THE BEAST**. Regional – Sacramento Music Circus, Alliance Theatre in Atlanta, Laguna Playhouse, Long Beach C.L.O. , La Mirada C.L.O. Recordings include the cast albums of **LADY BE GOOD**, **PARDON MY ENGLISH** and **OH, KAY!** on the Gershwin record label, Roxbury Records. Her eclectic career has also included singing Doo Wop with the group “Double Date” at Universal Studios Tour and Disneyland in Los Angeles and appearing as a special guest on the **TONIGHT SHOW** with Johnny Carson.

**GFOUR PRODUCTIONS** (*Producer*) proudly produces some of the world's most recognized shows, from Broadway to the West End. Current and recent Broadway productions and investments: **STEREOPHONIC**, **THE SHARK IS BROKEN**, **THE BOOK OF MORMON**, **THE PLAY THAT GOES WRONG** and **SIX**. West End: **STRANGER THINGS: THE FIRST SHADOW**. Current tours include **COMPANY**, **FUNNY GIRL**, **TINA: THE TINA TURNER MUSICAL**, and the international sensation **MENOPAUSE THE MUSICAL®** and its sequel. Winners of more than 50 Tony Awards® for their productions including **NINE**, **LA CAGE AUX FOLLES**, **MATILDA THE MUSICAL**, **THE INHERITANCE** and more.  
[www.GFourProductions.com](http://www.GFourProductions.com).

**SETH GREENLEAF** (*Director*) A Tony Award® winner for his work on **THE INHERITANCE** and the 50th anniversary production of **WHO'S AFRAID OF VIRGINIA WOOLF**, Seth would be the first to tell you that he's lived a theatrical life. A graduate of UCLA's School of Theatre, Film and Television, he was bitten early by the entertainment bug and has worked in theatre and film ever since. Some of his favorite highlights include producing **9 TO 5 THE MUSICAL** on Broadway with Dolly Parton, co-financing the Tony Award® and Olivier Award-winning musicals **THE BOOK OF MORMON** and **MATILDA THE MUSICAL**, and directing the award-winning documentary **F(L)AG FOOTBALL** ([FlagFootballTheMovie.com](http://FlagFootballTheMovie.com)). He currently has **THE SHARK IS BROKEN**, **THE PLAY THAT GOES WRONG**, **SIX**, **THE BOOK OF MORMON**, and **TINA: THE TINA TURNER MUSICAL** running on Broadway; and **FIDDLER ON THE ROOF** and **THE PLAY THAT GOES WRONG** on national tour in the U.S. Seth is also a founding member of the Broadway Green Alliance, helping to green the Great White Way, for more information on that effort please visit [BroadwayGreen.com](http://BroadwayGreen.com).

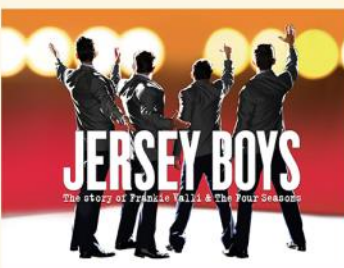
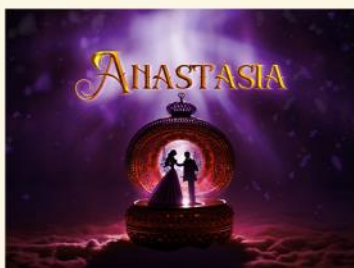
**JEANIE LINDERS** (*Creator/Writer*) created and wrote the original **MENOPAUSE THE MUSICAL®** and was a passionate voice for a generation of women facing more than just hot flashes. She was the recipient of the Veteran Feminist Medal of Honor presented by Gloria Steinem, and funded women's education and housing programs from New Orleans to Kenya and Ghana, as well as raising over a million dollars for the National Ovarian Cancer Coalition, as well as other charities. Jeanie's work in entertainment spanned three decades and included theatre, multi stage music festivals, and celebrity-driven events. She also launched The Center for Art & Entertainment and completed her *Marge Potter* book series. We continue to honor Jeanie's memory and legacy by sharing her humor, heart, and wit onstage each night, spreading her healing laughter across the world.



# TITUSVILLE PLAYHOUSE

1965-2025  
**60<sup>th</sup>**  
SEASON  
The Diamond of Arcadia

## MAINSTAGE



## STAGE 2



# SEASON TICKETS AVAILABLE NOW!

#playhouse60

WWW.TITUSVILLEPLAYHOUSE.COM

